

PIN

COMPORTA





ABOUT PIN

life at the heart of it all

Tucked away in the wild heart of Comporta lies Pin, the new quarter within the celebrated Pinheirinho estate. Surrounded by woodland and steps away from miles of untouched coastline, all kinds of adventures beckon – and every moment makes you feel more alive. Just over an hour south of Lisbon, Pin's residences feel a world away. A place where life feels lighter, yet more complete.

Here, weekends can be packed with activity or you can just take every day as it comes. Stroll along miles of untouched beach. Surf glassy waves as they roll onto the Comporta sand. Play golf or padel. Explore the endless splendour of the ancient pine forests. And know you're never far from all the pleasures the wider Pinheirinho estate has to offer.



welcome to the neighbourhood



Pin's residences sit on the highest point of the Pinheirinho estate. The forest is on your doorstep, the beach is so close you can taste the salt in the air and stretching into the horizon are the finest views for miles around.



An apartment here is more than a place to live. From the open-air cinema to the shared kitchen garden, every space feels joyful, safe and connected. Fostering a kindred community woven from a shared affinity for seizing the day.



MOVE WITH
ENERGY, LIVE WITH
INTENTION



the Pinheirinho Estate



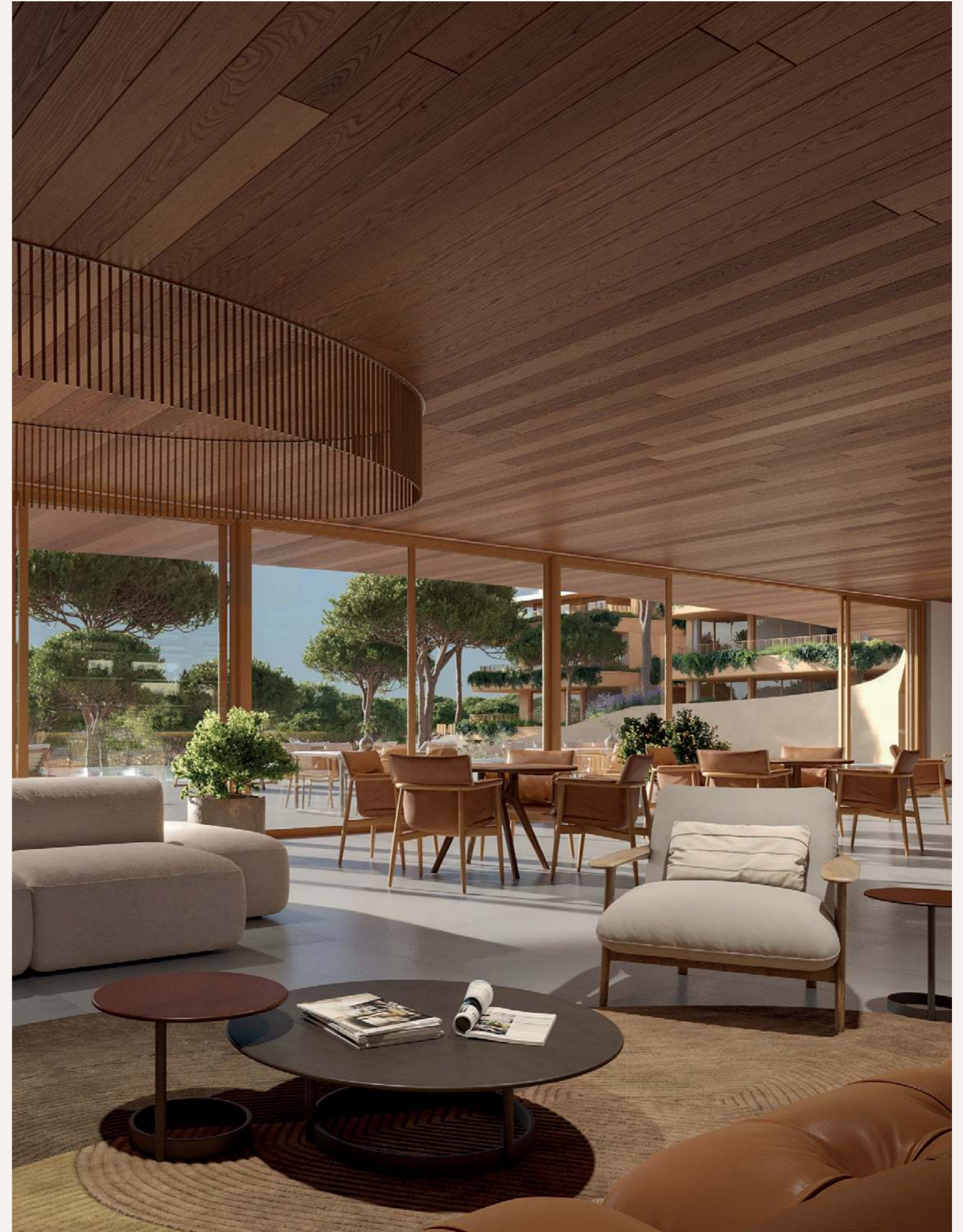




designed by nature

At Pin, life is there to be lived indoors and out, with every apartment built according to the principles of biophilic design. The essence of this approach is to create an effortless connection between architecture and the natural world, allowing light, greenery and space to flow. This means nature is more than something that lives outside your door; it is an integral part of everything around you.

- One to four room apartments
- Open-plan living throughout
- Secluded outdoor spaces
- Balconies, terraces, pools
- Panoramic views beyond





AMENITIES

life at Pin

The spirit of Pin is one of celebration, and the sense that joy can be found in life's everyday moments. All the amenities have been created to enrich your day, with places for laughter, reflection and exploration.

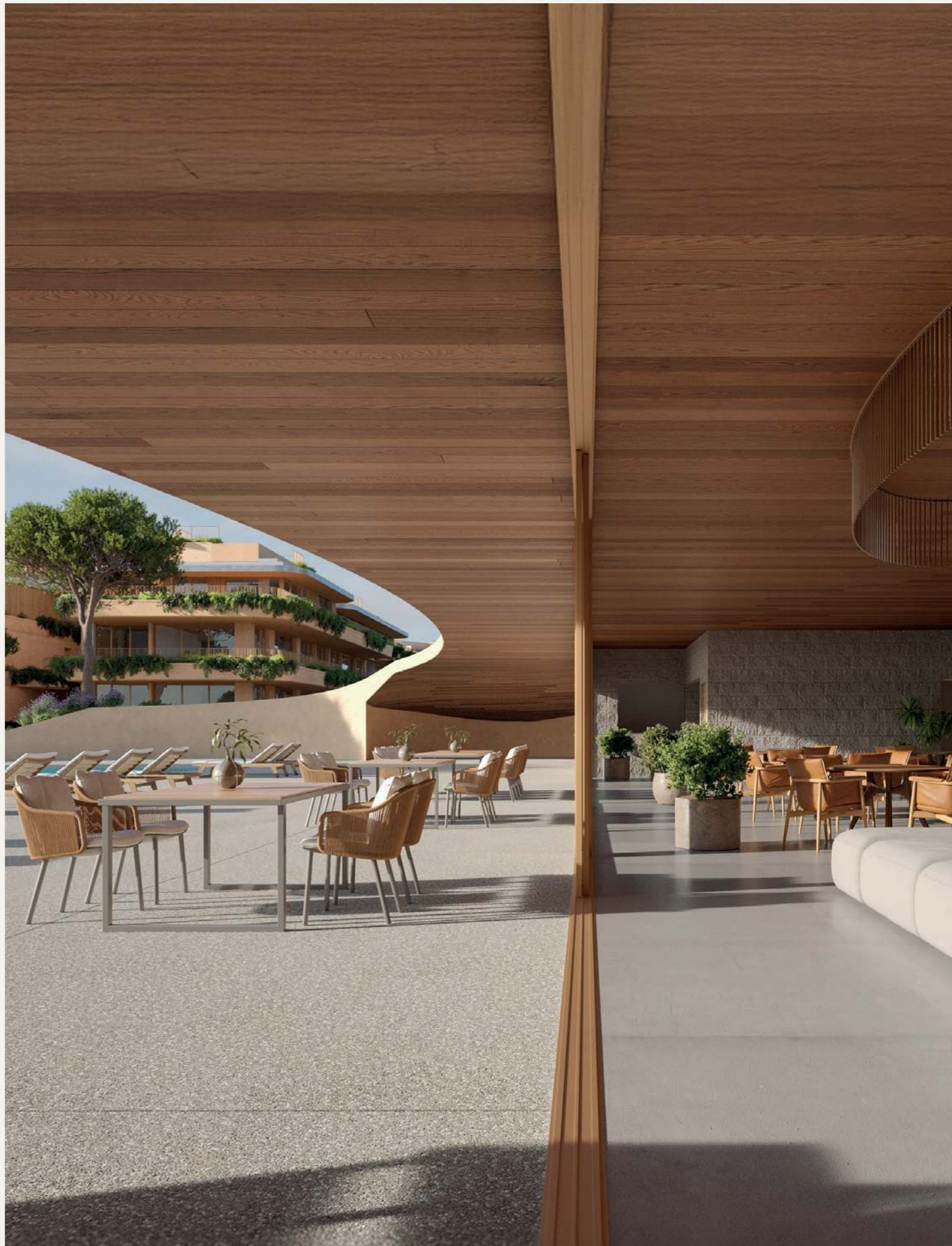
Exclusively at Pin:

- Two swimming pools
- Kids' club
- State-of-the-art gym
- Sauna and spa
- Vibrant nightclub
- Farm-to-table dining
- Wine cellar & cigar lounge
- Tranquil library
- Outdoor amphitheatre
- Children's play area
- Open-air cinema
- Sunset viewpoint
- Kitchen garden





CONTEMPORARY
DESIGN-LED
LIVING





SERVICES

services at Pin

At Pin, bespoke services are thoughtfully tailored to you – from enriching experiences to the seamless care of daily details – so you can focus on what matters.

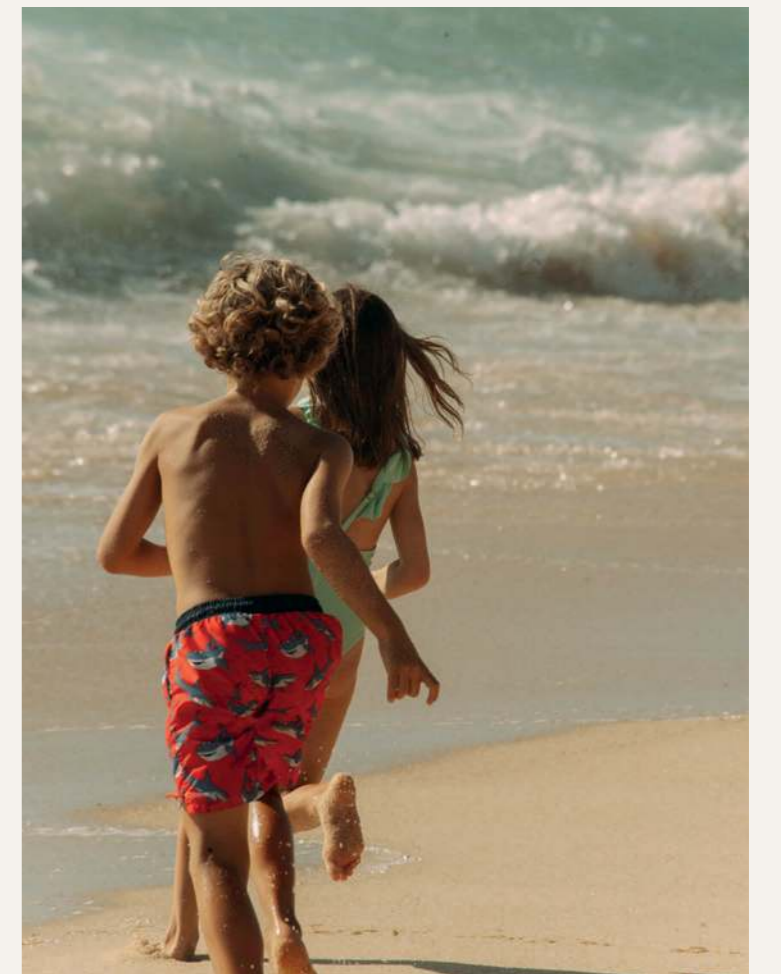
- 24/7 concierge and security
- Owners' rental programme
- Estate buggy service
- Landscape and garden care
- Valet parking
- Private pool maintenance
- Childcare and babysitting
- Personal training and wellbeing support
- Transfer services (airport and local)
- Vacant home management
- Tailor-made activities and excursions
- Housekeeping
- Grocery delivery
- Laundry and dry-cleaning services
- Golf services (tee-time bookings, equipment hire, transfers)
- Community events and workshops for residents

the wider Pinheirinho Estate

At Pin, residents enjoy a vibrant community of their own, with the privilege of seamless access to the additional amenities of the Pinheirinho Estate — just moments away by foot or bicycle.

- 18-hole golf course, designed by renowned Architect Jorge Santana Da Silva
- Golf clubhouse, designed by Jacobsen Arquitetura
- Padel, tennis, beach tennis and pickleball courts
- Serene yoga pavilion
- Open-air gym
- Swimming pool
- Kids' club
- Imaginative children's adventure park
- Expansive horse-riding paddock
- Gourmet restaurants
- Luxury retail village, spotlighting boutique sustainable brands
- Direct unspoiled beach access to 65 km of the Alentejo coastline
- Scenic running and cycling trails
- Local boating and horse-riding adventures
- Nearby vineyard tours and wine tasting
- Forest and sports experiences
- Water sports and surfing







about the Pinheirinho developer



VIC Properties

Founded in 2018, and with a development volume of over 3.0 billion euros under management, VIC Properties is a vibrant, dynamic and fully integrated real estate developer.

With a mission to create unforgettable memories alongside a strong sense of community, VIC Properties is focused on large-scale development projects within the residential and hospitality sectors in Portugal.

Headquartered in Lisbon, and supported by a highly talented team and pool of partners, VIC Properties has developed a sound reputation and track record over the years, a reflection of its iconic projects, extensive know-how and robust inhouse technical capabilities.

contact us

let's chat

+351 930 900 050
info@pinheirinhocomporta.com

follow us

@pinheirinhocomporta
pinheirinhocomporta.com/pin

Disclaimer: This document was prepared by Paisagem Propicia, Lda (hereinafter, the "company" or "we"), VAT 518512010 and having its registered office at Rua António Monteiro, Lote 33, Parque Industrial do Seixal, 2840-068 Aldeia de Paio Pires, freguesia do Seixal, Arrentela e Aldeia de Paio Pires, Concelho do Seixal, the information and materials are current as of the date of this document and can be changed without notice.

This document does not create or establish any obligation or arrangements of the company and its representatives to perform any transaction or conclude any agreement. This document shall not be regarded as a recommendation to perform any transaction and conclude any agreement and does not constitute a contractual proposal, an offer to contract, an invitation to treat or for offer, an offer to the public, or any other act that in any suitable manner could give rise to an expectation for the sale of the properties mentioned herein. As a consequence, the company has no obligation or undertaking to accept any offers possibly received on the basis of this document.

It is understood and acknowledged that any person's access to and use of this document (or any of the information and materials from it) constitutes their overall acceptance of the following: (1) none of the representatives of the company nor any other party involved in the preparation of this document makes any representation, warranty or claim that the materials and information contained herein are updated and accurate, nor shall they have any duty or liability to any person in connection therewith; (2) by virtue of access to this document, no one shall be entitled to claim detrimental reliance on any information provided or expressed; (3) no person should rely on statements or representations made within this document nor should any person rely on the statements or representations

made by any other source based on this document, and (4) the undertaking that any material or information contained in this document can be used only with the company's prior written approval. No liability is assumed for the information contained herein with regard to its accuracy, timeliness and completeness. This document is provided for informational purposes only and is not tailored to the personal circumstances of the addressee.

The information is not intended to replace the professional advice required prior to a purchase decision. In no event shall the company be liable for any loss or damage of any kind arising out of the use of the information contained herein. This document is not sent to natural persons or legal entities, or handed out at their place of residence, if they are citizen or resident of or are located in a jurisdiction where the distribution, publication, provision or use of this information would violate applicable laws. The company retains all the rights in relation to the information provided herein. This document may not be reproduced or redistributed without the express permission of Paisagem Propicia, Lda.

This document is subject to Portuguese Law. The courts of Portugal will have exclusive jurisdiction with regard to any dispute arising from or connected to this document. We will be happy to provide you with additional information about the project, specified residences and villas, free of charge, at any time. If you have any further questions or would like to use any materials or information contained in this document, please contact info@pinheirinhocomporta.com

PIN
COMPORTA